

Fixed Brush

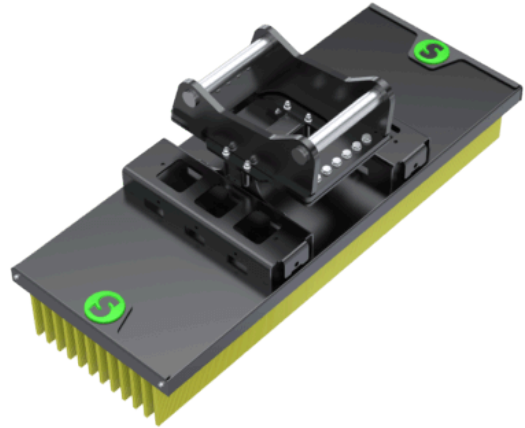
Mechanical work tool 2-20 tonnes



A multipurpose brush for excavators

The mechanical fixed brush has a variety of uses and is adapted for excavators.

It can easily be used under the tiltrotator. With the fixed brush you can sweep gravel, remove snow from bus stops and barns or sweep near traffic without risking stone chips. A robust design, pallet fork bracket as standard.



🔧 Teknisk specifikation

Modell	FB1800	FB2500
Bracket	S40, S45, S50, S60, S65, S70	S45, S50, S60, S70, S70/55
Machine weight [lb]	4400-44000	4400-44000
Weight from [lb]	506	616
Width [inch]	70.87	98.43
Length [inch]		
Height [inch]		